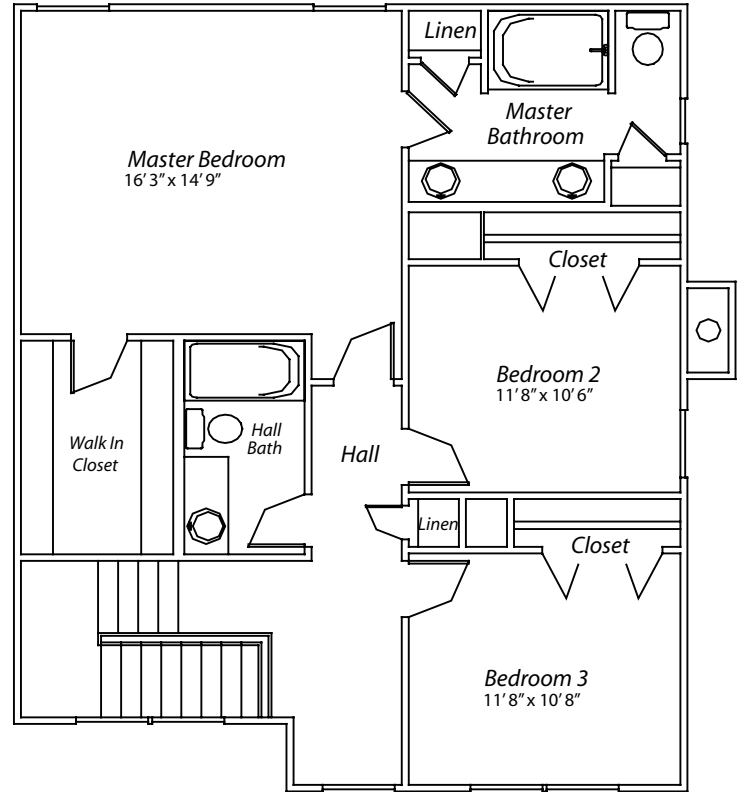
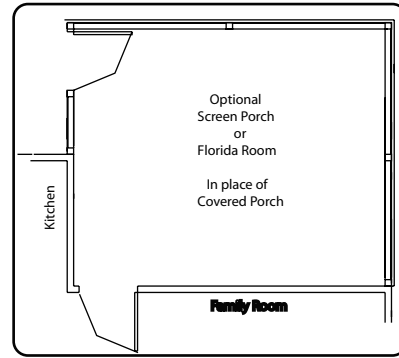
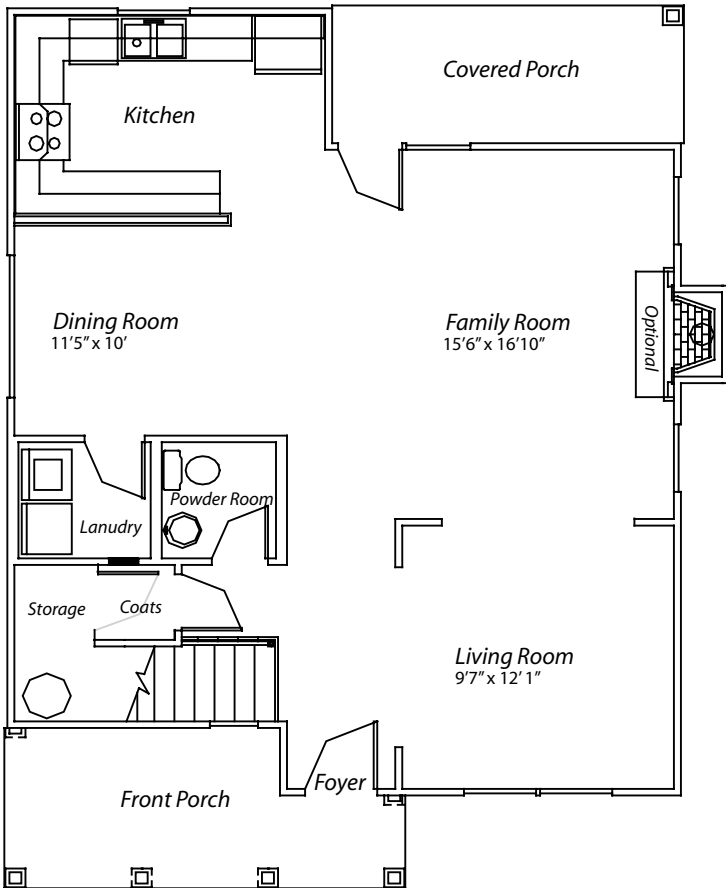


The Daybreak



DAYBREAK SINGLE FAMILY HOME DAYBREAK SINGLE FAMILY HOME DAYBREAK SINGLE FAMILY HOME DAYBREAK SINGLE FAMILY HOME DAYBREAK SINGLE FAMILY HOME DAYBREAK SINGLE FAMILY HOME DAYBREAK SINGLE FAMILY HOME DAYBREAK SINGLE FAMILY HOME



As you enter the first floor of this home from the generous front porch, you'll feel the warmth and comfort offered by this 3 bedroom, 2 1/2 bath plan. The first floor includes a large open family room/dining area with separate living room. A second covered porch is located just off the living area of the rear of the home. Upstairs you'll find the master suite plus two spacious bedrooms with lots of storage and closet space. This is truly a special home designed for your lifestyle.



ELEVATIONS AND FLOOR PLANS ARE ARTISTS RENDERINGS AND ARE ILLUSTRATED FOR MARKETING PURPOSES ONLY. MAY VARY PER ELEVATION AND SQUARE FOOTAGE AND ROOMS SIZE ARE APPROXIMATE. THE SELLER RESERVES THE RIGHT TO MAKE CHANGES WITHOUT PRIOR NOTICE OR OBLIGATION.